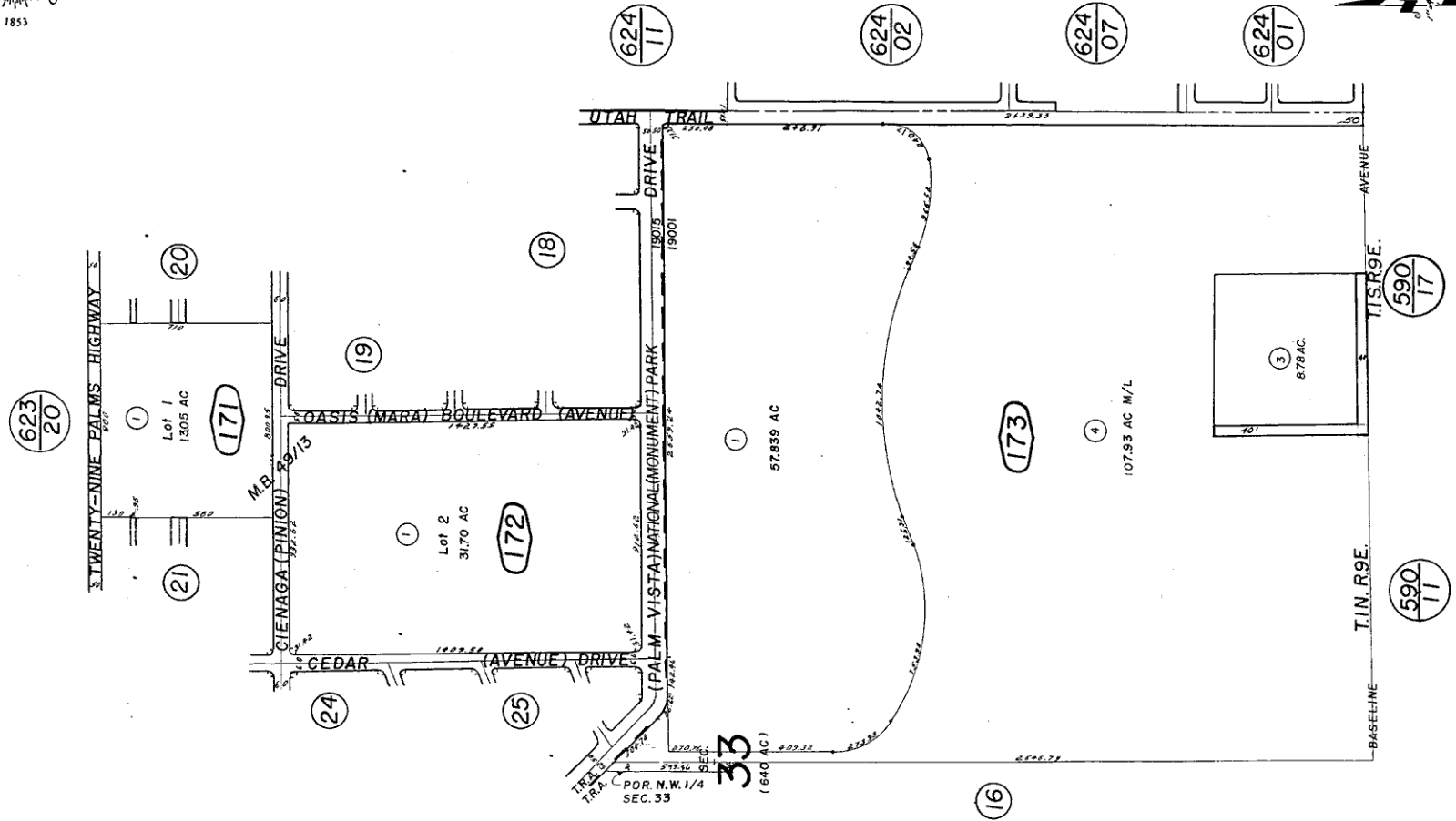
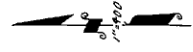




Portion E. 1/2 Section 33 T.1N., R.9E. S.B.B.&M.
C.S. 1456

City of Twentynine Palms
Tax Code Area
19001, 19015

617-17



March 1960

Tract No. 3762, M.B. 49/13

Note—Assessor's Blk. & Lot
Numbers Shown in Circles

Assessors Map
Book 617, Page 17
San Bernardino County

| |
|------------|
| REVISED |
| 3-21-67 |
| 6/20/94 RR |
| 1/24/95 RR |
| 3/2/95 CC |
| 4/1/98 CC |